

## CONTENTS

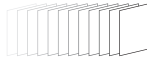
---

OPTION	<u>18</u>	SENS
	<u>19</u>	SQ30
	<u>19</u>	SQ31B
	<u>20</u>	SQ60i
	<u>20</u>	ZD20
	<u>21</u>	Boring
	<u>21</u>	Cording
FRAME	<u>22</u>	Wide Cap Frame
	<u>22</u>	Semi-wide Cap Frame
	<u>22</u>	Quick Change Cap Frame
	<u>23</u>	Frame
	<u>24</u>	Frame

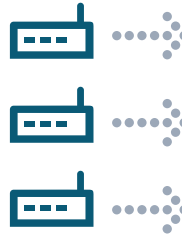
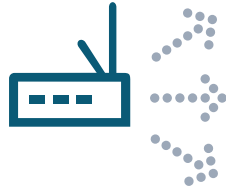
\* We can make some modification for improvements without previous notice.



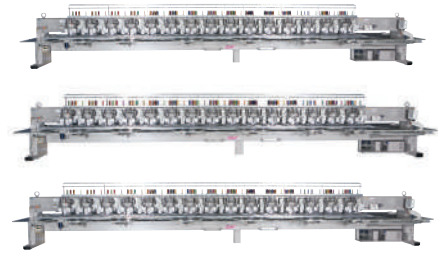
Design Server



Access Point

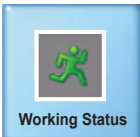


Wireless Receiver



Embroidery Machines

Main functions



Working Status



Working status

Window showing status of the embroidery machine selected in detail. Double click to confirm enlarged drawing part in the separate window.



Needle Bar Sequence

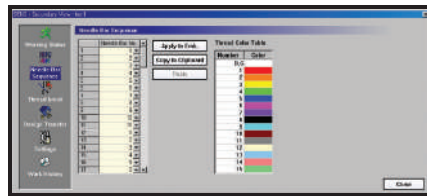
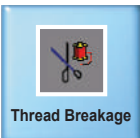
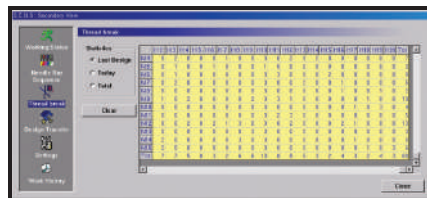


Table setting status

Window which provides setting status of sequence table for color change and functions such as Edit, Copy, Embed.

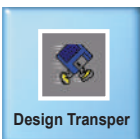


Thread Breakage

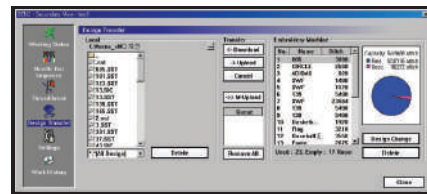


Thread Breakage

Provide thread breakage information for the embroidery machine being connected to network. (by Head, Color)

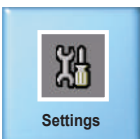


Design Transfer

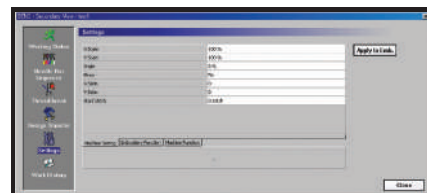


Design transfer

Transfer design using network.

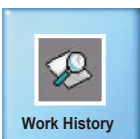


Settings

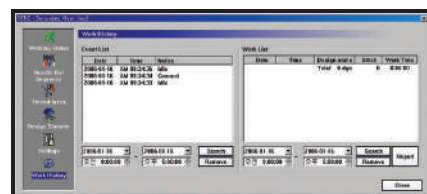


Basic settings

Window which provides basic setting information of connected embroidery machine by part and application function for changed setting value



Work History

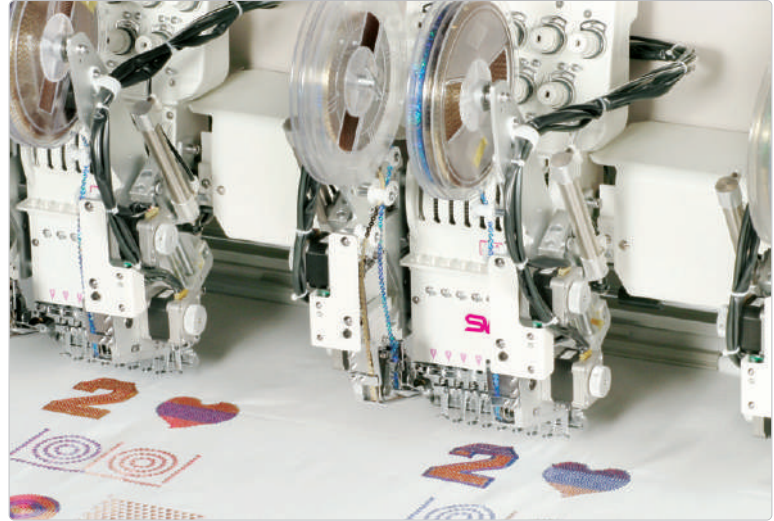


Work history

Provides status histories of connected embroidery machine and design of which work is finished. This has functions of search by condition and creating text report based on search result.

## SQ30

## Sequin



### Main Feature

- SQ30 provide the optimal effect for spangle embroidery to cope with customer's various needs through high productivity

### Benefit

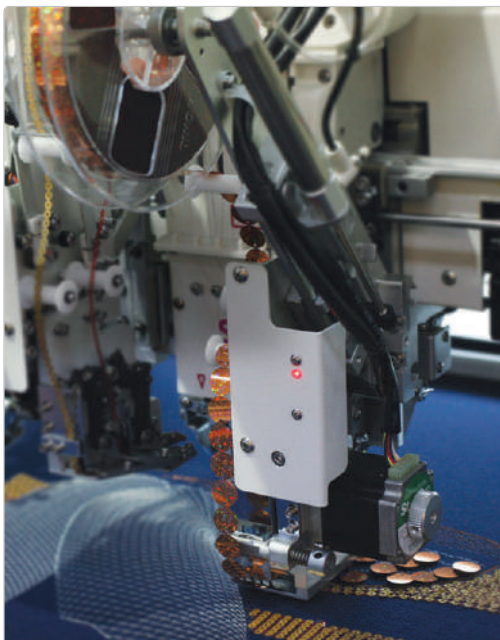
- A wide range of applicable sequin spangles in diameter 2-9mm [SQ30]
- Easy to use spangle embroidery of two types

### Specifications

MODEL		SQ30
Max. Speed		Max. 1,000 rpm [SB Series]
Sequin Device Attachment Type	L	Left Side
	R	Right Side
Sequin Size [mm]		Φ 2, Φ 3, Φ 4, Φ, Φ 6, Φ 7, Φ 9
Motor		Pulse Motor x 1
Compressed Air		0.49 Mpa [5.0kgf/cm <sup>2</sup> ]
Reel Size [mm]	Normal	Φ 180
	Max	Φ 225

## SQ31B

## Big Sequin



### Main Feature

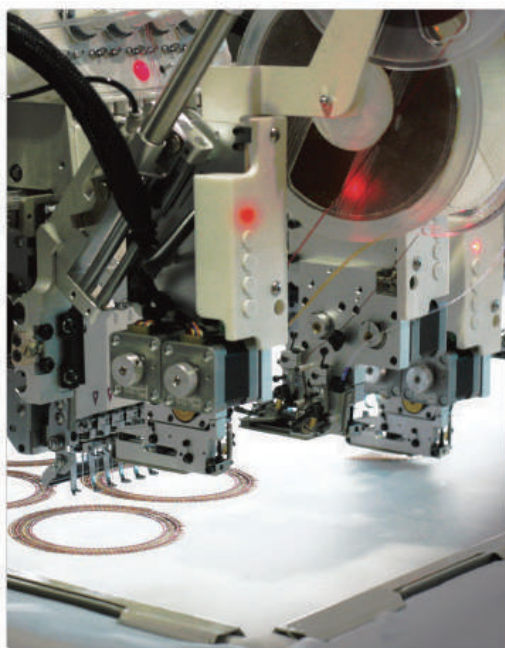
- Sequin device for big size spangles
- A wide range of applicable sequin spangles in diameter 11~25 mm

### Specifications

Max. Speed	K-Series	700 rpm
	SB-Series	
Sequin Device Attachment	L	Left Side
	R	Right Side
	LR	Both Side
Sequin Size [mm]		Φ11~ Φ25
Motor		Pulse Motor x 1
Compressed Air		0.49 Mpa [5.0kgf/cm <sup>2</sup> ]
Reel Size [mm]		Φ 180

## SQ60i

### Individual Sequin



#### Main Feature

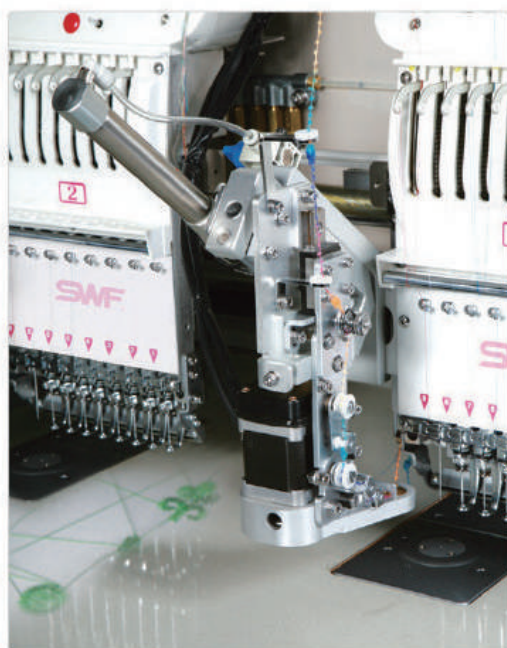
- Max. 4 different spangle sizes in different colors and shapes
- Two automatic feeding system
- Easy replacement of guide (Optional supply)
- Individual lifting for the each head

#### Specifications

Max. Speed	Max. 1,000 rpm [SB Series]	
Sequin Size [mm]	Φ3, Φ4, Φ5, Φ6, Φ7, Φ9,	
Motor	Pulse Motor x 2 [SQ60i-M is 3EA]	
Compressed Air	0.49 MPa [5.0kgf/cm <sup>2</sup> ]	
Reel Size [mm]	Normal	Φ 180
	Max	Φ 225
Applicable Models	SB, CE, TB, K-Series	
	[Unable to be attached to old model's Electronic Parts]	

## ZD20

### Zigzag Cording



#### Main Feature

- Various types of thread usable
- Much less stitches than generic cording
- Higher Productivity : 800 - 1,000 rpm
- Automatic lifting system on whole heads
- Manual lifting system on each head
- Much higher embroidery quality : good touch feeling
- Good stability and reliability

#### Specifications

Max. Speed	Max. 800 rpm [SB Series]	
Motor	Pulse Motor x 1	
Cord Diameter Size	2.5mm or less [TA-Series are suitable for cord with more than 2.5mm diameter]	
Applicable Thread	Uneven cord with 2.5mm or less	
Applicable Models	SB, CE, TA, E, K Series	
	[Unable to be attached to old model's Electronic Parts]	



## Boring

### Boring Attachment

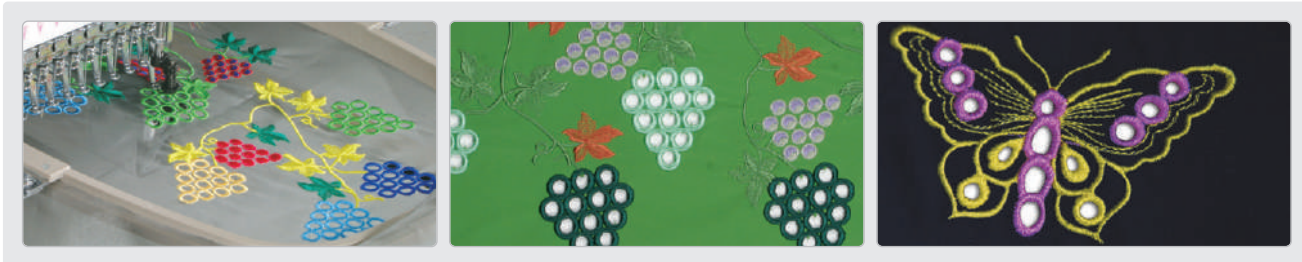


#### Main Feature

- Boring Device cuts out various shaped holes in the fabric for special embroidery
- Easy to mount

#### Specifications

Running RPM	Equal to each machine's maximum RPM
Applicable Models	Attached to all machines
Usage	Make a hole in the fabric



## Cording

### Cording Attachment



#### Main Feature

- Cording device is used for cording and looping work

#### Benefit

- Easy to mount
- Easy to switch to looping

#### Specifications

Direction for Attached Device	L	Left Type
	R	Right Type
Thickness for thread	Φ 1.3 mm ~ Φ 2.5 mm	
Press Foot [1 Needle Type]	Φ 1.3 mm	
	Φ 1.7 mm	
	Φ 2.0 mm	
	Φ 2.5 mm	
Press Foot [2 Needle Type]	Φ 1.3 mm ~ Φ 1.5 mm	
	Φ 1.7 mm ~ Φ 2.0 mm	
	Φ 2.3 mm ~ Φ 2.5 mm	
	Applicable Models	
	Each model expect Compact, 1x1, MA-6	

## Wide Cap Frame

## Cap Frame



### Main Feature

- Sewing on finished caps
- Cap Frame is used for Tubular type from single-head embroidery machine
- Cap frame has wide cap frame and semi-wide cap frame
- Various embroidery is provided irrespective of the size and thickness of cap

## Semi-wide Cap Frame

## Cap Frame



### Benefit

- Semi-wide cap frame work is more stable than wide cap frame work by fixing both left and right sides firmly

### Specifications

MODEL	Wide Cap Frame	Semi-wide Cap Frame
Embroidering range [X x Y]mm	360 x 75	180 x 83
Usage	Cap workhood	Cap workhood
Applicable Models	Attached all of tubular type models	Attached all of tubular type models

## Quick Change Cap Frame

## Cap Frame



The Quick Change cap frame driver is designed for precision performance and unsurpassed ease of operation.

The driver is supported by a slide bearing, comprised of a series of precision ball bearings that ride on a steel pivot axle, while the movement is controlled by a state of the art linear motion guide rail.

This combination creates the most advanced cap frame system in the industry and provide the means for the unequalled ease of installation and operation.

- Linear motion guide rail provides smooth precise movement for cap embroidery
- Pivot axle supports the weight of the driver
- A slide bearing provides exceptional accuracy and support
- Tapered pivot axle for superior ease of installation

# Frame

Flat type machine's embroidery frames

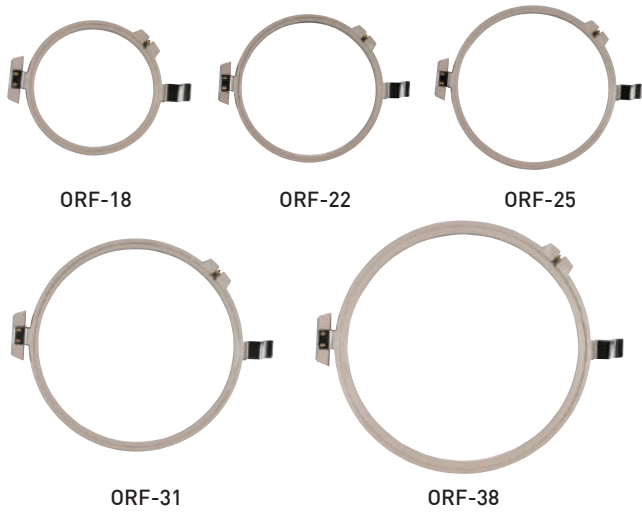
## SRF (Spider Round Frame)



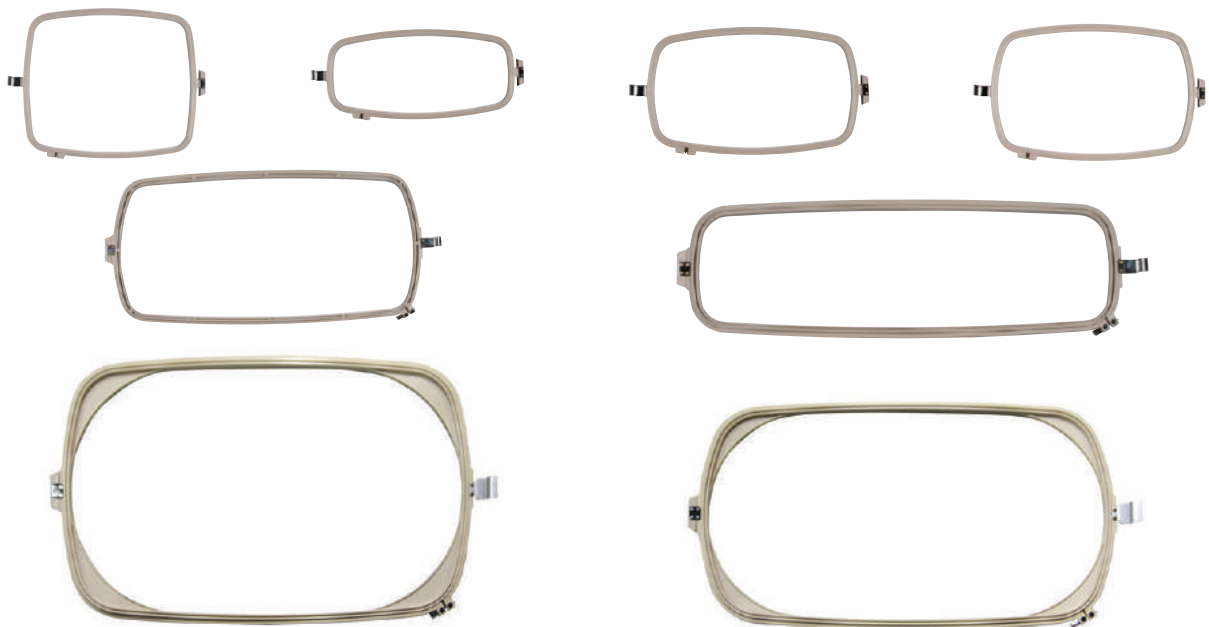
## ASF (Aluminum Square Frame)



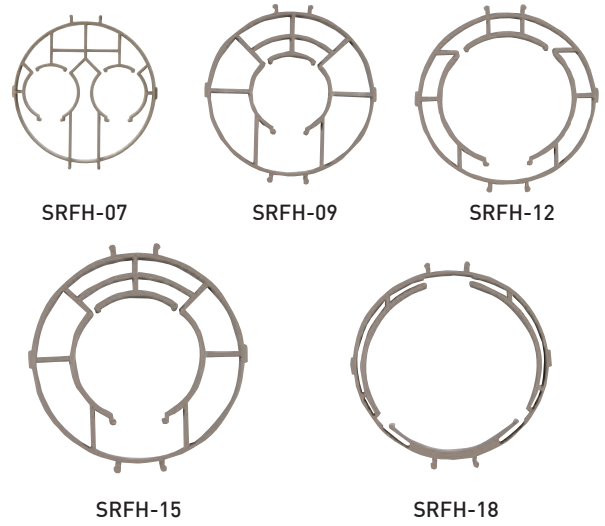
## ORF (One Touch Round Frame)



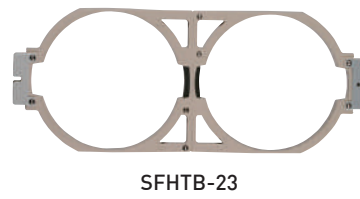
## OSF (One Touch Square Frame)



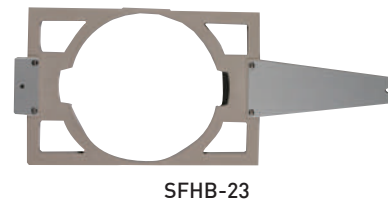
## SRFH (Spider Round Frame Holder)



## SFHTB (Spider Round Frame Holder Twin base)



## SFHB (Spider Round Frame Holder base)



# Frame

Tubular type machine's embroidery frames

## TSF (Tubular Square Frame)



TSF 24x 24



TSF 32x 44



TSF 37x 43



TSF 45x 36



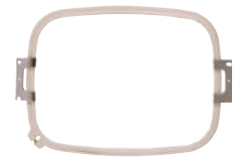
TSF 45x 44



TSF32x 36



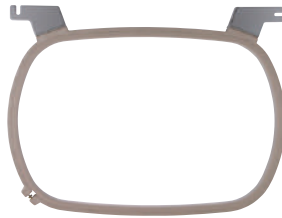
TSF 30x 30



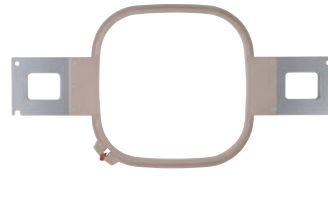
TSF 36x 27



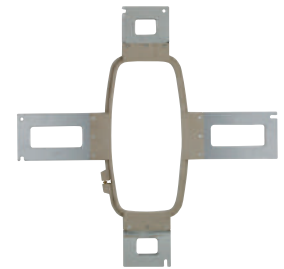
TSF 412x 270



TSF 460x 300



For UK 2/4/6 Heads

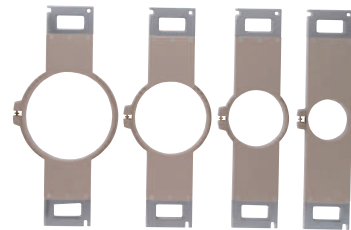


TSF 30x 15

## TMRF (Tubular Magnetic Round Frame)



## TRF (Tubular Round Frame)

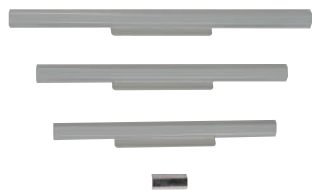


# Frame

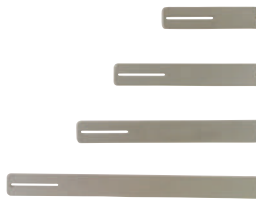
Supporter and Others



CLIP



MIDDLE FRAME



MAGNET HOLDER



ONE TOUCH CLIP